



THE LONDON
COLLEGE

PROSPECTUS

2024/2025



Commitment to Excellence

Table of Contents

General

Welcome Message.....	2
Vision & Mission.....	3
Partnerships & Accreditations.....	4
Location & Facilities.....	7
Teaching and Learning.....	10
Entry Requirements.....	11
How to Apply.....	13
Funding.....	15

Programmes Offered

BTEC Higher National Diploma HND

BTEC Higher National Certificate HNC

Applied Sciences (Biology).....	HNC/HND.....	16
Business.....	HNC.....	18
Business Management.....	HND.....	21
Creative Media Production (Game Development).....	HNC/HND.....	24
Hospitality Management.....	HNC/HND.....	27
Construction & Built Environment (Civil Engineering)....	HNC/HND.....	30
Engineering (Electrical and Electronic).....	HNC/HND.....	33

Degree Programmes

Bachelor Degree	36
BA (Hons) Business Management (CMI accredited).....	36
BSc(Hons) Civil Engineering Practice.....	39
BSc (Hons) Engineering (Electrical and Electronic).....	42
BA (Hons) International Hospitality Management.....	45

Supporting Information

College Location.....	48
Notes.....	50

Welcome Message



On behalf of the Board of Governors, It is my pleasure to welcome you all to The London College.

We are well established and successful Institution of Higher Education located in Hounslow, West London.

Our students come from diverse ethnic, socioeconomic, and cultural backgrounds. They are both mature and school leavers, have different lifestyles, interests, ambitions, and aspirations.

We take a great pride in supporting our students in accomplishing their academic and career objectives.

Our professional and committed staff are central to our success. We are profoundly impressed by the quality of our staff across both academic and professional services and their continued dedication to making a difference to our students' lives.

Thank you for your interest in our institution and we look forward to seeing you on campus.

We look forward to welcoming you to the college.

Dr A. Janbey
College Principal





Vision & Mission

Our Vision – We will become the Institution of opportunity that is renowned for our creativity and innovation.

We will develop our students and staff to reach for vocational excellence and become recognised as a leading alternative provider of quality Higher Education programmes.

To be an employer-focused institution connected with London communities, providing teaching and learning which opens doors and meets the needs of employers. Our motto is: “Commitment to Excellence”

Our Core Values

The London College has a strong sense of identity and aspires to deliver the right programmes, in the right way, to meet the needs of a very diverse student population.

At The London College, we strive to be a well-established, highly experienced, independent higher education provider with a proven track record in delivering a wide range of undergraduate programmes.

Our success has been achieved through high quality teaching and learning delivered through small class size. This sets us apart from our competitors.





Partnerships and Accreditations

The Quality Assurance Agency for Higher Education (QAA)



Quality and Standards Review (QSR)

Quality and Standards Review for monitoring and intervention is the process QAA uses to provide evidence to the Office for Students (OfS) about whether registered providers referred by the OfS to QAA meet one or more of the Core practices of the UK Quality

Code for Higher Education (the Quality Code).

QSR review was conducted at the London College in November 2019. The review team has concluded that all the Core Practices have been 'Met' with 'High Confidence'.

Teaching Excellence Framework - TEF



Teaching Excellence Framework

We are proud that our student experience rating has improved to Silver, reflecting the high quality of our academic offerings. This significant improvement is a testament to our commitment to providing exceptional educational experiences.

Our Bronze rating for student outcomes demonstrates our commitment to high-quality education and the presence of some exceptional features. We are continually working to elevate our student outcomes and aim to achieve even higher standards in the future.

The London College is an approved partner of the University of Derby.

The University of Derby is an ambitious, innovative and modern university offering industry-relevant, expert teaching, from foundation and undergraduate degrees to postgraduate study and research.

Derby's academic strength is backed up by practical experience to ensure its students are ready for a successful career, wherever their talents lie. With more than £200 million invested in the last ten years, the University offers some of the best university facilities in the UK, including a Nuclear Skills Academy, developed in partnership with Rolls-Royce Submarines Ltd, STEM Centre, Forensic Training Facility and NHS-standard hospital ward.

A new city-centre based Derby Business School, part of the University's broader vision to expand its reach and reputation across the UK and globally, is also being developed.

This landmark building is proposed to be net zero carbon in construction and operation, aligning to the University's sustainability strategies and its low carbon expertise and research agenda.

At Derby, academic expertise, world-leading research and innovation is used to foster talent, support skills development and promote links with businesses regionally, nationally and globally. As well as traditional degree routes, the University offers apprenticeships from levels 2-7 for a wide range of job roles, working with high profile employers including Rolls Royce, the NHS and the Institute of Quarrying. In addition, continuing professional development, knowledge transfer and sector-leading online courses create opportunities for individuals, employers and communities to develop and flourish.

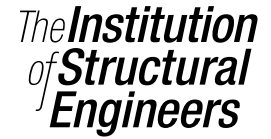
The University is committed to working with partners to support social mobility, opening the doors to lifelong learning opportunities for anybody who wishes to progress their education. This has been recognised through the University's involvement in the city of Derby's membership of the UNESCO Global Network of Learning Cities and its vision for inclusive lifelong learning that truly puts Derby on the world map as an exemplar of best practice.



PEARSON

We are an approved Pearson centre for BTEC Higher National qualifications.

Pearson is the UK's largest awarding organisation offering qualifications to schools, colleges and employers internationally.



The Civil Engineering degree award is Professionally accredited by the institution of Civil Engineers. Holders of this degree will be fully satisfying the educational base for the Incorporated Engineer (IEng) Membership. Please refer to: www.jbm.org.uk for further information.

Memberships



UCAS Membership

(Undergraduate Admissions)

The college is a member of UCAS.

Our institution code is L62.



College Location and Facilities

We are based in London. London is a very cosmopolitan city. It is both a historic capital and a hotbed of new ideas and innovation. It is a city of parks, culture and commerce, and is home to many world-renowned museums, galleries and famous buildings. It is a hugely exciting place to live, work and study.

London's famous landmarks such as Buckingham Palace, Houses of Parliament, Big Ben, Tower of London, Hyde Park, Tate Britain and Tate Modern, the London Eye, Madame Tussauds, the British Museum and Victoria & Albert Museum are amongst the perks of living in this exciting metropolis.

Our campus in Cranford is based in a modern, spacious building, which offers excellent teaching and learning facilities for our students and staff.

Teaching and learning resources comprise: classrooms, lecture theatres, library, technical and engineering laboratories, a multi-faith prayer room, a canteen and student common areas; visual aids such as overhead projectors, televisions, video recording and editing equipment; photocopying and printing facilities and range of software applications to support delivery of a wide range of qualifications.

Our library contains a full range of continuously updated textbooks relevant to the courses offered by the college. The college also has electronic resources, including textbooks and major academic and professional journals, which can be searched globally.

Our library is managed by a professional librarian, with extensive industry and academic experience, who is available to help students locate essential information, develop information handling skills and exploit the wide range of resources to the full.

For those students who require computers there are desktop and laptop computers available for use.

Our computing facilities offer a selection of graphic, design, multimedia, animation and CAD software; engineering simulation software and programming languages. Students have free access to computing facilities and Wi-Fi.



Library and Learning Resources

The College also runs its own web mail server and Intranet for students and staff. We continually upgrade and develop our computing facilities, for the benefit of our students, to ensure we are keeping up with the ever -changing technology.





Virtual learning environments support the delivery of Pearson Higher National and University of Derby degree qualifications.

Our College campus is located within a short distance of Hounslow West and Hounslow Central underground stations on the Piccadilly line. Additionally, the College is easily accessible via several buses from underground stations on the Piccadilly line.

Central London main train and underground stations are within a forty minute journey from the College.

We are situated in an area with a wide variety of popular supermarkets, chain food outlets, restaurants, bars, cafeterias and sandwich shops. These offer traditional English, Italian, French, Asian and Mediterranean menus.



The facilities in the immediate vicinity of the campus are excellent and include cafeterias, restaurants, public libraries, shops, supermarkets, hotels, hostels, banks, cinemas, places of worship and public parking.



Teaching and Learning

Our highly qualified and experienced lecturers are one of our greatest assets. They teach a varied portfolio of qualifications in a wide range of study majors. Our lecturers have teaching, as well as, professional experience in their specialist subject areas.

Low student to faculty ratio means that our lecturers are able to give individual attention to our students. We are proud to keep our classes relatively small.

You will be taught through a combination of lectures, seminars and practical laboratory sessions, depending on your major of study.

Your studies will be supported by field trips, visits to exhibitions, career fairs and guest speakers from the industry and professional bodies.

You will be assessed through a combination of individual and group projects, case studies, oral presentations, written and examinations, depending on your major of study.

Student Support

Support is provided in the following areas:

- Money and Funding
- Student Welfare
- Disability
- Safety and Security
- Academic Progress
- English and Study skills
- Careers
- Further Study



Entry Requirements



BA/BSs (Hons) entry requirements

Each course has its own entry requirements – it's a certain number of UCAS points. You can find the number of UCAS points that you will need for your chosen course on the appropriate course page.

The UCAS point requirements will be made up primarily from your core A2s (full A-levels) or equivalent qualifications such as BTEC Diploma, International Baccalaureate, Scottish Highers etc. A certain value of points from Level 3 qualifications such as AS-levels (where those AS-levels are not taken on to A2-level), the extended project, or music qualifications will be accepted. Points from Key Skills Level 3 are not accepted.

These qualifications are accepted:

- A-levels
- AVCEs
- BTEC National Award, Certificate or Diploma
- BTEC QCF
- Progression Diploma
- Advanced Diploma
- NVQ Level 3 and upwards
- Access to Higher Education Diploma
- Art and Design Foundation Diploma
- CACHE Diploma
- International, European or Welsh Baccalaureate
- Apprenticeship Scheme qualifications
- equivalent qualifications (go to our section on international qualifications to find out what we accept for entry on to an undergraduate course)

In addition, you are required to have for five GCSE subjects including maths and English Language at grade C or 4 or above (we'll normally accept Higher Diploma qualifications as an equivalent to GCSEs).

What if I do not meet any of these entry requirements?

Even if you have few or no formal qualifications, you may be able to gain entry to the course if you have the required communication and learning skills as well as the knowledge, experience and motivation to succeed.

You may need to take an Access course or Foundation course first.

If you have been away from academic study for a while, these courses are a great way to get you back into studying. Or if you have never studied before, they help you learn new study skills, essential for success in higher education.

Advanced Standing

Have you recently taken a course in higher education or do you have a high level of professional experience?

If so, you may be able to gain credit for this and enter a course at a stage and level appropriate to your previous study and experience. You'll need to show evidence, including references, when you apply.

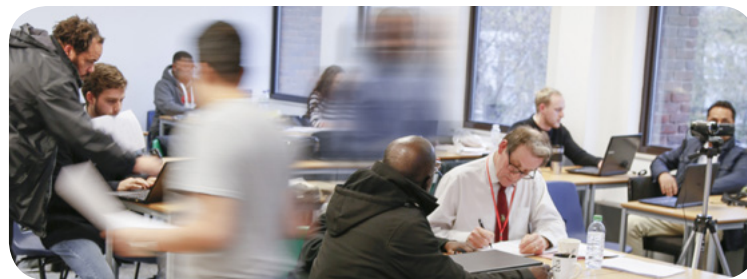
BA/BSc (Hons) Year 3 Entry

- Higher National Diploma in a relevant major
- Foundation Degree/DipHE in a relevant major
- Successful completion of two years of a degree programme in a relevant major showing the equivalent of 240 credit points at levels 4 and 5 - subject to RPL

English Requirement

Applicants whose first language is not English must show evidence of a good level of competence in both written and spoken English. The following qualifications (or their equivalents) are acceptable as a minimum level of competence in English for undergraduate study:

- O Level/GCSE/IGCSE/A-level/AS-level English Language Examination: grade C or 4 or above
- British Council IELTS Academic English Test – an overall band of 6.0.
- Cambridge First Certificate, Certificate in Advanced English or Proficiency in English: Pass at grade C.
- Internet Based Test TOEFL: Minimum score of 70.
- Pearson Test of English (PTE): a score of at least 43 in each component.
- City & Guilds (Pitman Examination in International ESOL): Pass at level B1.
- Or equivalent.

**How to Apply**

Our Admissions Office offers assistance with the application process.

Apply through UCAS

If you are applying for full time undergraduate courses such as a Bachelor degree you should apply through UCAS.

The UCAS institution code for The London College is L62.

When applying you also need to know UCAS code for your course e.g. 001N. Please make sure that you copy the code names and code numbers correctly onto the UCAS application form.

UCAS provides comprehensive information the application process at www.ucas.com

Start Dates

September, January and April.

Closing date for applications for UK/EU students

On-time applications must be made between 1st September and 15th January. The closing date for UCAS on-time applications is 15th January.

Late applications (received after January 15th) will be considered but applying late may reduce your chances of being accepted. Applications received after 30th June will go into the clearing scheme operating in summer.

Apply directly to the College

If you are applying for courses starting in January or part time courses you should apply directly to the college. You must apply online.

Application procedure:

- Select the course which is right for you.
- Scan your documents and save in a PDF or JPEG format.
- In addition to your on-line application you will be required to upload copies of the following documents:
 - Photo page from your passport
 - Qualifications
 - References
 - CV (Optional)

When do I need to apply?

Direct applications are taken throughout the year.



How is my application assessed?

When we have received your application it will be considered for admission to your chosen course of study. You may be interviewed in person or by telephone.

You may be required to take English and/or mathematics test.

All degree applications are subject to approval by the University of Derby.

Successful applicants will receive either a conditional offer of admission or an unconditional offer of admission.

What is a conditional offer?

- there are conditions attached to your offer, for example, you need to complete a qualification or attend an interview, present a proof of funding or maintenance funds or pay your fees before you can enroll, attend induction and start your course.

What is an unconditional offer?

- you have fully satisfied academic and other requirements for the course. You need to enroll, attend induction and start your course.

You should arrange for funding to be in place for the start your course. Our Admissions Office can help you with the funding application process.



Undergraduate Funding (2024/25)

Full-time study

A Tuition Fee Loan is available to most UK full-time undergraduate students. The loan will match the amount of tuition fees you have to pay and is administered by the Student Loan Company. The tuition fee loan is paid directly to the College.

A maintenance loan for living costs is also available. The amount you get depends on your personal circumstances and your household income.

The online calculator (<https://www.gov.uk/student-finance-calculator>) will give you an accurate idea of what level of student funding you may be eligible for.

Other useful resources:

<https://studentfinance.campaign.gov.uk/>

<https://www.gov.uk/student-finance>

<https://www.gov.uk/guidance/universal-credit-and-students>

Other Sources of Funding

You do not have to apply for a tuition fee loan from the Student Loans Company to fund your studies. Some students use private funding or employer sponsorship to pay for their course.

Part-time study

If you are a part-time student on a degree course you can apply for a tuition fee loan and a maintenance loan.

The tuition fee loan is paid directly to the college. The amount you get depends on the cost of your tuition fees.

Your maintenance loan will be paid at pro-rata of full-time study. The amount you get depends on your personal circumstances and your household income.

Repaying loans

When you start repaying your loan and how much you pay depends on which repayment plan you're on. For more information visit:

<https://www.gov.uk/repaying-your-student-loan>



BTEC HNC Higher National Certificate
BTEC HND Higher National Diploma
Applied Sciences (Biology)

Fact File

Award:	BTEC Higher National Certificate (RQF level 4) BTEC Higher National Diploma (RQF level 5)
Awarded by:	Pearson Education
Start dates:	September, January, and April
Study Mode:	Full Time
Duration:	HNC - 1 year, HND - 2 years
UCAS code:	HNC - C100, HND - C200

Entry Requirements

You will be expected to have at least one of the following:

- A BTEC Level 3 qualification in Applied Sciences (or a related subject)
- A GCE Advanced Level profile that demonstrates strong performance in a relevant subject or adequate performance in more than one GCE subject; this profile is likely to be supported by GCSE grades A* to C and/or 9 to 4 (or equivalent) in subjects such as maths and English
- Other related Level 3 qualifications
- An Access to Higher Education Diploma awarded by an approved further education institution
- Related work experience
- An international equivalent of the above

Plus you will usually have five GCSE subjects including Maths and English Language at grade C/grade 4 or above. We will normally accept Key Skills and Higher Diploma qualifications as the equivalent to GCSEs.

English language requirements: a recognised qualification in English at CEFR level B2 or equivalent.



What if I don't meet any of these entry requirements?

Even if you have few or no formal qualifications, you may be able to gain entry to the course if you have the required communication and learning skills, as well as the knowledge, experience and motivation to succeed.

You will be required to take an English and/or Mathematics skills test if you do not hold GCSE Maths and English qualifications or their recognised equivalent. You may also be interviewed for the course.

You may need to take an Access course or Foundation (Year 0) course first. If you have been away from academic study for a while, these courses are a great way to get you back into studying. Or if you have never studied before, they help you learn new study skills, essential for success in higher education.

About the Course

Pearson BTEC Higher National Certificate (HNC) in Applied Sciences (Biology) is aimed at students wanting to continue their education through applied learning.

Pearson BTEC Higher Nationals provide a wide-ranging study of the Applied Sciences sector and are designed for students who wish to pursue or advance their career in Applied Sciences or related fields. In addition to the knowledge, understanding and skills that underpin the study of the Applied Sciences sector, Pearson BTEC Higher Nationals in Applied Sciences give students experience of the breadth and depth of the sector that will prepare them for further study or training in Applied Sciences related fields.

The objectives of the Pearson BTEC Higher Nationals in Applied Sciences are as follows:

- to equip students with the Applied Sciences skills, knowledge, and the understanding necessary to achieve high performance in the global Applied Sciences environment
- to provide education and training for a range of careers in Applied Sciences, including Laboratory Technician, Research Technician, Technical Support Chemist / Biologist, Quality Support Technician, Manufacturing Technician, Science Technician, Technologist, Instrumentation Technician and Product Development Technician
- to provide opportunities for students to enter or progress in employment in the Applied Sciences, or progress to higher education qualifications such as an Honours degree in Biology, Environmental Sciences or a related area.



Course Content

BTEC HNC/HND Applied Sciences (Biology) (RQF Level 5)

Year 1

- Fundamentals of Laboratory Techniques
- Scientific Data Handling Approaches and Techniques
- Regulation and Quality in the Applied Sciences (Pearson-set)
- Cell Biology
- Fundamentals of Chemistry
- Anatomy and Human Physiology
- Fundamentals of Biochemistry
- Personal and Professional Development for Scientists

(HNC can be awarded on completion of Year 1)

Year 2

- Analysis of Scientific Data and Information
- Applied Sciences Research Project (Pearson-set)
- Biochemistry of Macromolecules and Metabolic Pathways
- Molecular Biology and Genetics
- Immunology
- Stem Cell Biology
- Infectious Diseases and Diagnosis

Assessment

You will benefit from an innovative variety of assessment modes. Assessment is mainly via coursework, which can take forms such as traditional essays and reports, individual and group project work, research and consultancy projects, presentations, posters, and design of digital materials.

BTEC HNC Higher National Certificate Business

Fact File

Award:	BTEC Higher National Certificate (RQF level 4)
Awarded by:	Pearson Education
Start dates:	September, January, and April
Study Mode:	Full Time
Duration:	1 year
UCAS code:	101N

Entry Requirements

You will be expected to have at least one of the following:

- A GCE Advanced Level profile that demonstrates strong performance in a relevant subject or adequate performance in more than one GCE subject.
- Other related Level 3 qualifications
- An Access to Higher Education Certificate awarded by a recognised institution
- An international equivalent of the above.

Plus you will usually have five GCSE subjects including Maths and English Language at grade C/grade 4 or above. We will normally accept Key Skills and Higher Diploma qualifications as the equivalent to GCSEs.



What if I don't meet any of these entry requirements?

Even if you have few or no formal qualifications, you may be able to gain entry to the course if you have the required communication and learning skills, as well as the knowledge, experience and motivation to succeed.

You will be required to take an English and/or Mathematics skills test if you do not hold GCSE Maths and English qualifications or their recognised equivalent. You may also be interviewed for the course.

You may need to take an Access course or Foundation (Year 0) course first. If you have been away from academic study for a while, these courses are a great way to get you back into studying. Or if you have never studied before, they help you learn new study skills, essential for success in higher education.

About the Course

The purpose of BTEC Higher National Certificate in Business is to develop you as professional, self-reflecting individual able to meet the demands of employers in the business sector and adapt to a constantly changing world.

The objectives of the BTEC Higher National Certificate in Business are as follows:

- To offer a balance between employability skills and the knowledge essential for students with entrepreneurial, employment or academic aspirations.
- Students will gain a wide range of sector knowledge tied to practical skills gained in research, self-study, directed study and workplace scenarios to meet local or specialist needs.
- To provide you with insight and understanding into international business operations and the opportunities and challenges presented by a globalised market place.
- To offer students the chance of career progression in their chosen field.
- To provide you with education and training for a range of careers in business, including management, administration, human resources and entrepreneurship.
- To equip you with knowledge and understanding of culturally diverse organisations, cross-cultural issues, diversity and values.
- To provide you with opportunities to enter or progress in employment in business, or progress to higher education qualifications such as HNC in the business fields.

Course Content

BTEC HNC in Business

- The Contemporary Business Environment
- Marketing Processes and Planning
- Management of Human Resources
- Leadership and Management
- Accounting Principles
- Managing Successful Business Project
- Entrepreneurial Ventures
- Operational Planning and Management

Assessment

Assessment is mainly via coursework, which can take forms such as traditional essays and reports, group project work, research and consultancy projects, presentations, posters, and design of digital materials.





What can I do next?

BTEC is one of the world's most successful and best-loved applied learning brands, engaging students in practical, interpersonal and thinking skills for more than thirty years. BTECs are work-related qualifications for students taking their first steps into employment, or for those already in employment and seeking career development opportunities. BTECs are widely recognised by the industry. The range of skills acquired on the course will be particularly relevant to accounting, finance, business management, banking and retail sectors.

Professional bodies such as ACCA, CIMA and CIPS offer exemptions towards their professional qualifications to graduates of Pearson BTEC Higher National Certificate in Business

You can also study further for a Higher National Diploma in Business Management or a Bachelor degree.

Teaching and Learning

You will be taught through a combination of lectures, seminars and tutorials. You will be taught by experienced lecturers whose knowledge and expertise are matched to the content of the modules on the course.

When not attending lectures or seminars, you will also be expected to study through independent learning. Independent learning plays a vital role in your studies and involves research, such as reading books and journal articles, preparing assignments and presentations, working on individual and group projects. You will have access to a variety of materials to support you in your learning, such as books, journals, lecture notes and a wide range of e-resources.

BTEC HND Higher National Diploma Business Management

Fact File

Award:	BTEC Higher National Diploma (RQF level 5)
Awarded by:	Pearson Education
Start dates:	September, January, and April
Study Mode:	Full Time
Duration:	2 years
UCAS code:	002N

Entry Requirements

You will be expected to have at least one of the following:

- A BTEC Level 3 qualification in Business
- A GCE Advanced Level profile that demonstrates strong performance in a relevant subject or adequate performance in more than one GCE subject.
- Other related Level 3 qualifications
- An Access to Higher Education Certificate awarded by a recognised institution
- An international equivalent of the above.

Plus you will usually have five GCSE subjects including Maths and English Language at grade C/grade 4 or above. We will normally accept Key Skills and Higher Diploma qualifications as the equivalent to GCSEs.



What if I don't meet any of these entry requirements?

Even if you have few or no formal qualifications, you may be able to gain entry to the course if you have the required communication and learning skills, as well as the knowledge, experience and motivation to succeed.

You will be required to take an English and/or Mathematics skills test if you do not hold GCSE Maths and English qualifications or their recognised equivalent. You may also be interviewed for the course.

You may need to take an Access to HE course or Foundation (Year 0) course first. If you have been away from academic study for a while, these courses are a great way to get you back into studying. Or if you have never studied before, they help you learn new study skills, essential for success in higher education.

About the Course

The purpose of BTEC Higher National Diploma in Business Management is to develop you as professional, self-reflecting individual able to meet the demands of employers in the business sector and adapt to a constantly changing world.

The objectives of the BTEC Higher National Diploma in Business Management are as follows:

- To offer a balance between employability skills and the knowledge essential for students with entrepreneurial, employment or academic aspirations.
- To equip you with business skills, knowledge and the understanding necessary to achieve high performance in the global business environment.
- To provide you with education and training for a range of careers in business, including management, administration, human resources and entrepreneurship.
- To provide you with insight and understanding into international business operations and the opportunities and challenges presented by a globalised market place.
- To equip you with knowledge and understanding of culturally diverse organisations, cross-cultural issues, diversity and values.
- To provide you with opportunities to enter or progress in employment in business, or progress to higher education qualifications such as an Honours degree in business.



Course Content

BTEC HND in Business Management

Year 1

- The Contemporary Business Environment
- Marketing Processes and Planning
- Management of Human Resources
- Leadership and Management
- Accounting Principles
- Managing Successful Business Project
- Entrepreneurial Ventures
- Operational Planning and Management

(HNC can be awarded on completion of Year 1)

Year 2

- Research Project
- Organisational Behaviour
- Understanding and Leading Change
- Global Business Environment
- Business Strategy
- Consumer Behaviour and Insight
- Operations and Project Management

Assessment

Assessment is mainly via coursework, which can take forms such as essays and reports, group project work, research and consultancy projects, presentations, posters, and design of digital materials.

What can I do next?

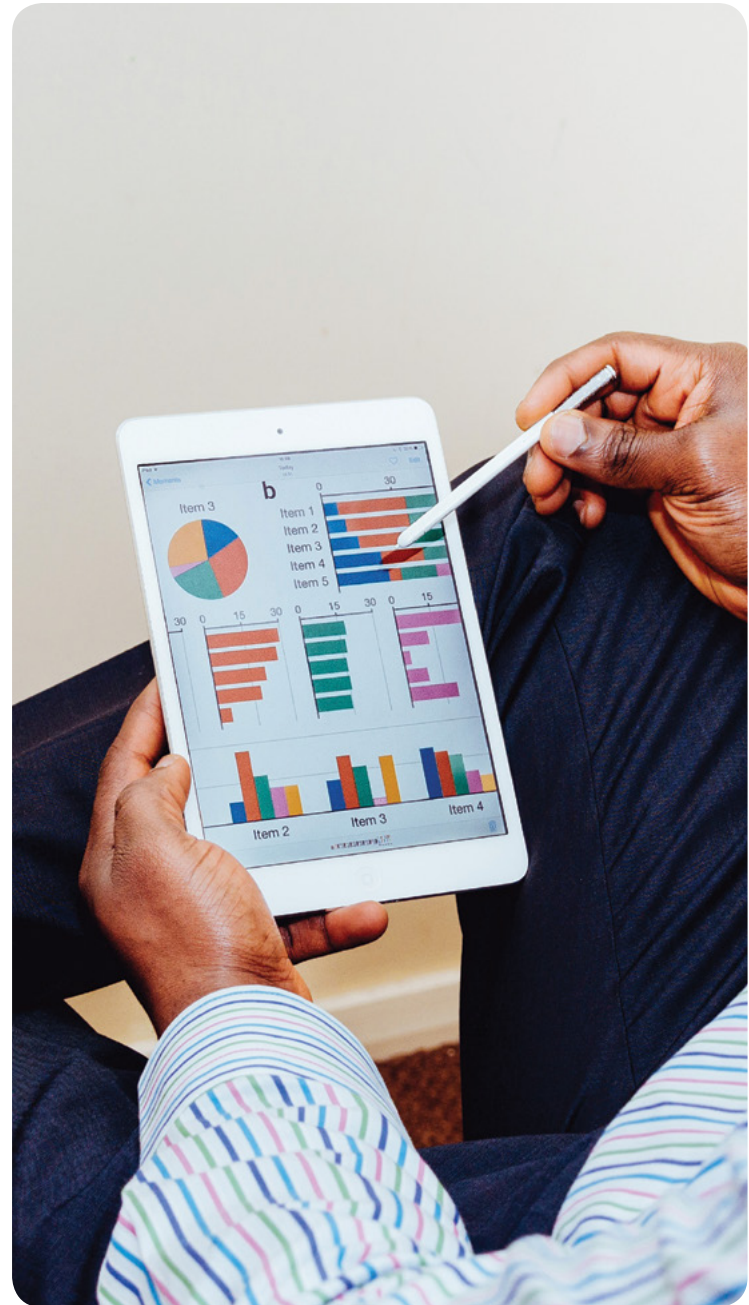
BTEC is one of the world's most successful and best-loved applied learning brands, engaging students in practical, interpersonal and thinking skills for more than thirty years. BTECs are work-related qualifications for students taking their first steps into employment, or for those already in employment and seeking career development opportunities. BTECs are widely recognised by the industry. The range of skills acquired on the course will be particularly relevant to management, finance, banking and retail sectors.

Professional bodies such as ACCA, CIMA and CIPS offer exemptions towards their professional qualifications to graduates of Pearson BTEC Higher National Diploma in Business Management. Graduates can also progress to a BA (Hons) Top Up degree in Business Management awarded by the University of Derby.

Teaching and Learning

You will be taught through a combination of lectures, seminars and tutorials. You will be taught by experienced lecturers whose knowledge and expertise are matched to the content of the modules on the course.

When not attending lectures or seminars, you will also be expected to study through independent learning. Independent learning plays a vital role in your studies and involves research, such as reading books and journal articles, preparing assignments and presentations, working on individual and group projects. You will have access to a variety of materials to support you in your learning, such as books, journals, lecture notes and a wide range of e-resources.



HNC Higher National Certificate Creative Media Production (Game Development)

Programme Fact File

Award:	BTEC Higher National Certificate (RQF level 4)
Awarded by:	Pearson Education
Start dates:	September and January
Study Mode:	Full Time
Duration:	HNC - 1 year
UCAS code:	354G

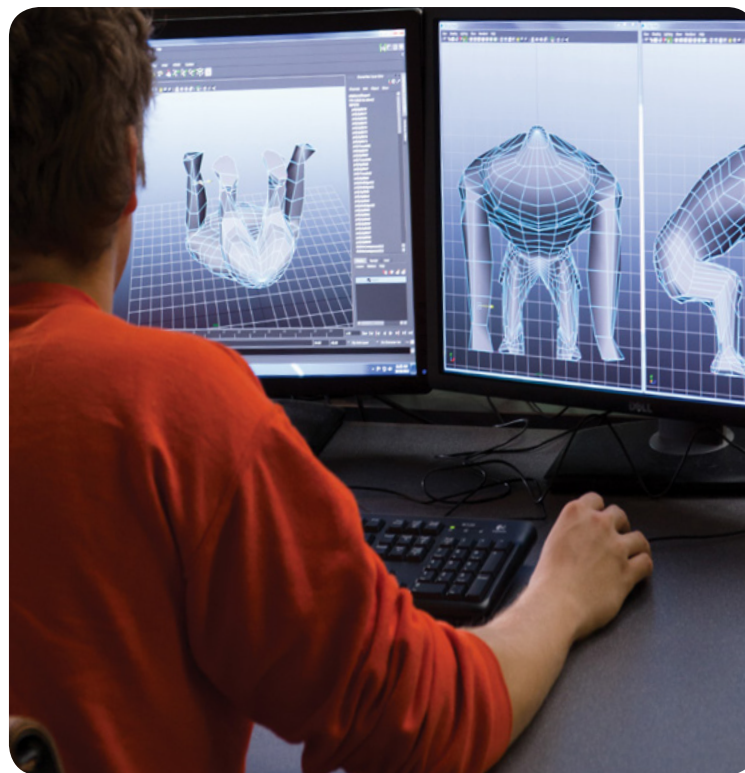
Entry Requirements

You will be expected to have at least one of the following:

- A BTEC Level 3 qualification in Creative Media Production
- A GCE Advanced Level profile that demonstrates strong performance in a relevant subject or adequate performance in more than one GCE subject.
- Other related Level 3 qualifications
- An Access to Higher Education Certificate awarded by a recognised institution
- An international equivalent of the above
- Related work experience

Plus you will usually have five GCSE subjects including Maths and English Language at grade C/grade 4 or above. We will normally accept Key Skills and Higher.

English language requirements: a recognised qualification in English at CEFR level B2 or equivalent.



What if I don't meet any of these entry requirements?

Even if you have few or no formal qualifications, you may be able to gain entry to the course if you have the required communication and learning skills, as well as the knowledge, experience and motivation to succeed.

You will be required to take an English and/or Mathematics skills test if you do not hold GCSE Maths and English qualifications or their recognised equivalent. You may also be interviewed for the course.

You may need to take an Access to HE course or Foundation (Year 0) course first. If you have been away from academic study for a while, these courses are a great way to get you back into studying. Or if you have never studied before, they help you learn new study skills, essential for success in higher education.

About the Course

The purpose of BTEC Higher National Certificate in Creative Media Production (Game Development) is to develop you as professional, self-reflecting individual able to meet the demands of employers in the creative media business sector and adapt to a constantly changing world.

The objectives of the BTEC Higher National Certificate in Creative Media Production (Game Development) are as follows:

- To equip students with Creative Media Production (Game Development) with the skills, knowledge and understanding necessary to achieve high performance in the global creative media production environment.
- To provide education and training for a range of careers in creative media production including sound media, visual effects, motion graphics, web & app development, games development, journalism and film & television.
- To provide insight and understanding into the diversity of roles within Creative Media Production, recognising the importance of collaboration at all levels.
- To equip students with knowledge and understanding of culturally diverse organisations, cross-cultural issues, diversity and values.
- To provide opportunities for students to enter or progress in employment in creative media production, or progress to higher education qualifications such as an Honours degree in Creative Media Production or a related area.
- To support students to understand the local, regional and global context of creative media production and, for those students with a global outlook, to aspire to international career pathways.
- To provide students with opportunities to address contemporary issues facing the industry, and society at large, with particular emphasis on sustainability and the environment, recognising the role that creative media production plays in addressing these issues.

LEARN 3D MODELING AND ANIMATION



BTEC HNC in Creative Media Production (RQF Level 4)

Year 1

- Individual Project
- Creative Media Industries
- Game Development Practice
- Games in Context
- Games Design
- Professional Practice
- Principles of Animation
- Art Development

(HNC can be awarded on completion of Year 1)

Year 2

- Collaborative Project
- Personal Professional Development
- Advanced Game Development
- Advanced Animation
- Advanced Modelling
- Scripting for Games
- Environment and Level Design



Our Student - VR Development

Assessment

You will benefit from an innovative variety of assessment modes. Assessment is mainly via coursework, which can take forms such as traditional essays and reports, group project work, research and consultancy projects, presentations, posters, and design of digital materials.

What can I do next?

BTEC Higher National Diplomas/Certificates are well-established and internationally recognised qualifications to offering graduates progression directly to employment.

On successful completion of this course, you will be able to apply for work as a game designer within the games, film and TV production industries. You can also study further for a Higher National Diploma in Computer Game Design or a Bachelor degree.

Teaching and Learning

You will be taught through a combination of lectures, seminars and tutorials. You will be taught by experienced lecturers whose knowledge and expertise are matched to the content of the modules on the course.

When not attending lectures or seminars, you will also be expected to study through independent learning. Independent learning plays a vital role in your studies and involves research, such as reading books and journal articles, preparing assignments and presentations, working on individual and group projects. You will have access to a variety of materials to support you in your learning, such as books, journals, lecture notes and a wide range of e-resources.

BTEC HNC Higher National Certificate BTEC HND Higher National Diploma Hospitality Management

Fact File

Award:	BTEC Higher National Certificate (RQF level 4) BTEC Higher National Diploma (RQF level 5)
Awarded by:	Pearson Education
Start dates:	September, January, and April
Study Mode:	Full Time
Duration:	2 years
UCAS code:	078N

Entry Requirements

You will be expected to have at least one of the following:

- A BTEC Level 3 qualification in Hospitality or related subject
- A GCE Advanced Level profile that demonstrates strong performance in a relevant subject or adequate performance in more than one GCE subject.
- Other related Level 3 qualifications
- An Access to Higher Education Certificate awarded by a recognised institution
- An international equivalent of the above.

Plus you will usually have five GCSE subjects including Maths and English Language at grade C/grade 4 or above. We will normally accept Key Skills and Higher Diploma qualifications as the equivalent to GCSEs.



What if I don't meet any of these entry requirements?

Even if you have few or no formal qualifications, you may be able to gain entry to the course if you have the required communication and learning skills, as well as the knowledge, experience and motivation to succeed.

You will be required to take an English and/or Mathematics skills test if you do not hold GCSE Maths and English qualifications or their recognised equivalent. You may also be interviewed for the course.

You may need to take an Access to HE course or Foundation (Year 0) course first. If you have been away from academic study for a while, these courses are a great way to get you back into studying. Or if you have never studied before, they help you learn new study skills, essential for success in higher education.

About the Course

The purpose of BTEC Higher National Diploma in Hospitality Management is to develop you as professional, self-reflecting individual able to meet the demands of employers in the hospitality sector and adapt to a constantly changing world.

The objectives of the BTEC Higher National Diploma in Hospitality Management are as follows:

- To provide you with education and training for a range of management careers in hospitality, licensed retail, food and beverage or leisure and tourism sectors; for example food and beverage manager, front of house manager or events manager.
- To empower you through the study of core themes in management, leadership, innovation and entrepreneurship to maximise employability.
- To equip you with hospitality skills, knowledge and the understanding necessary to achieve high performance in the global hospitality environment.
- To equip you with managerial and technical skills, knowledge and the understanding necessary to achieve high performance in the global Hospitality environment
- To equip you with knowledge and understanding of culturally diverse organisations, cross-cultural issues, diversity and values of Tourist and Hospitality Industry.
- To provide you with opportunities to address contemporary issues facing the industry, and society at large; with particular emphasis on sustainability and the environment, globalisation and the impact of digital technology.
- To develop your ability to make an immediate contribution to employment in the hospitality management industry, through effective use and combination of the knowledge and industry experience that is both responsive to the constantly evolving needs of students and employers.



Course Content

BTEC HND Hospitality Management

Year 1

- The Contemporary Hospitality Industry
- Managing the Customer Experience
- Professional Identity and Practice
- The Hospitality Business Toolkit
- Leadership and Management for Service Industries
- Managing Food and Beverage Operations
- Managing Conference and Events
- Human Resource Management

(HNC can be awarded on completion of Year 1)

Year 2

- Research Project
- Hospitality Consumer Behaviour and Insight
- Hospitality Supply Chain Management
- Sales Management
- Tourist Resort Management
- Launching a New Venture
- Managing and Running a Small Business

Assessment

Assessment is mainly via coursework, which can take forms such as traditional essays and reports, group project work, research and consultancy projects, presentations, posters, and design of digital materials.

What can I do next?

BTEC is one of the world's most successful and best-loved applied learning brands, engaging students in practical, interpersonal and thinking skills for more than thirty years. BTECs are work-related qualifications for students taking their first steps into employment, or for those already in employment and seeking career development opportunities. BTECs are widely recognised by the industry. The range of skills acquired on the course will be particularly relevant to hospitality management, leisure, and tourism sectors.

BTEC Higher Nationals in Hospitality Management have also been approved by the professional body - The Confederation of Tourism and Hospitality - as suitable qualifications for students wanting to progress onto their approved courses at the appropriate level.

Graduates can also progress to a BA (Hons) Top Up degree in International Hospitality Management awarded by the University of Derby.

Teaching and Learning

You will be taught through a combination of lectures, seminars and tutorials. You will be taught by experienced lecturers whose knowledge and expertise are matched to the content of the modules on the course.

When not attending lectures or seminars, you will also be expected to study through independent learning. Independent learning plays a vital role in your studies and involves research, such as reading books and journal articles, preparing assignments and presentations, working on individual and group projects. You will have access to a variety of materials to support you in your learning, such as books, journals, lecture notes and a wide range of e-resources.



BTEC HNC Higher National Certificate
BTEC HND Higher National Diploma
Construction & Built Environment
(Civil Engineering)

Fact File

Award:	BTEC Higher National Certificate (RQF level 4) BTEC Higher National Diploma (RQF level 5)
Awarded by:	Pearson Education
Start dates:	September, January, and April
Study Mode:	Full Time
Duration:	HNC - 1 year HND - 2 years
UCAS code:	HNC - 202H , HND - 302H

Entry Requirements

You will be expected to have at least one of the following:

- A BTEC Level 3 qualification in Construction and The Built Environment
- A GCE Advanced Level profile that demonstrates strong performance in a relevant subject or adequate performance in more than one GCE subject.
- Other related Level 3 qualifications
- An Access to Higher Education Certificate awarded by a recognised institution
- An international equivalent of the above
- Related work experience

Plus you will usually have five GCSE subjects including Maths and English Language at grade C/grade 4 or above is strongly recommended. We will normally accept Key Skills and Higher Diploma qualifications as the equivalent to GCSEs.



What if I don't meet any of these entry requirements?

Even if you have few or no formal qualifications, you may be able to gain entry to the course if you have the required communication and learning skills, as well as the knowledge, experience and motivation to succeed.

You will be required to take an English and/or Mathematics skills test if you do not hold GCSE Maths and English qualifications or their recognised equivalent. You may also be interviewed for the course.

You may need to take an Access to HE course or Foundation (Year 0) course first. If you have been away from academic study for a while, these courses are a great way to get you back into studying. Or if you have never studied before, they help you learn new study skills, essential for success in higher education.

About the Course

The purpose of BTEC Higher National Diploma in Construction & Built Environment (Civil Engineering) is to develop you as professional, self-reflecting individual able to meet the demands of employers in the civil engineering and construction sector and adapt to a constantly changing world.

The objectives of the BTEC Higher National Diploma in Construction & Built Environment (Civil Engineering) are as follows:

- To equip you with construction and the built environment skills, knowledge and the understanding necessary to achieve high performance in the global construction and the built environment sector.
- To provide you with education and training for a range of careers in construction and the built environment, including civil engineering, building services engineering, quantity surveying, construction management, and architectural technology.
- To provide you with an understanding of the way technologies are transforming the industries of construction and the built environment and prepare them to work with these technologies.
- To provide you with opportunities to address contemporary issues facing the industry, and society at large; with emphasis on sustainability and the environment, recognising the role that construction and the built environment plays in addressing these issues.
- To provide you with the context in which to consider professional ethics and their relation to personal, professional and statutory responsibilities within the industry.



Course Content

BTEC HNC/HND in Civil Engineering

Year 1

- Construction Design Project
- Science and Materials
- The Construction Environment
- Mathematics for Construction
- Digital Application for Construction Information
- Civil Engineering Technology
- Principles of Structural Design
- Geotechnics & Soil Mechanics

(HNC can be awarded on completion of Year 1)

Year 2

- Group Project (Pearson-set)
- Advanced Structural Design
- Construction Technology for Complex Building Projects
- Further Mathematics for Construction
- Personal and Professional Development
- Highway Engineering
- Hydraulics

Assessment

You will benefit from an innovative variety of assessment modes. Assessment is mainly via coursework, which can take forms such as traditional essays and reports, individual and group project work, research and consultancy projects, presentations, posters, and design of digital materials

What can I do next?

BTEC is one of the world's most successful and best-loved applied learning brands, engaging students in practical, interpersonal and thinking skills for more than thirty years. BTECs are work-related qualifications for students taking their first steps into employment, or for those already in employment and seeking career development opportunities. BTECs are widely recognised by the industry.

The range of skills acquired on the course will be particularly relevant to construction practice and management, construction technology, civil engineering technology, legal and statutory responsibilities in construction.

Professional bodies such as Institution of Civil Engineers, Institution of Structural Engineers, Royal Institution of Chartered Surveyors, Chartered Institute of Building, Chartered Institute of Architectural Technologists, Chartered Institution of Building Services Engineers, Chartered Institute of Plumbing and Heating and Engineers offer exemptions towards their qualifications to graduates of Pearson BTEC Higher Nationals in Construction & Built Environment (Civil Engineering).

Graduates can also progress to a BA (Hons) Top Up degree in Engineering – Civil, awarded by the University of Derby.



Teaching and Learning

You will be taught through a combination of lectures, seminars and tutorials. You will be taught by experienced lecturers whose knowledge and expertise are matched to the content of the modules on the course.

When not attending lectures or seminars, you will also be expected to study through independent learning. Independent learning plays a vital role in your studies and involves research, such as reading books and journal articles, preparing assignments and presentations, working on individual and group projects. You will have access to a variety of materials to support you in your learning, such as books, journals, lecture notes and a wide range of e-resources.



BTEC HNC Higher National Certificate BTEC HND Higher National Diploma Engineering (Electrical and Electronic)

Fact File

Award:	BTEC Higher National Certificate (RQF level 4) BTEC Higher National Diploma (RQF level 5)
Awarded by:	Pearson Education
Start dates:	September, January, and April
Study Mode:	Full Time
Duration:	HNC - 1 year HND - 2 years
UCAS code:	HNC - 106H HND - 006H

Entry Requirements

You will be expected to have at least one of the following:

- A BTEC Level 3 qualification in Engineering
- A GCE Advanced Level profile that demonstrates strong performance in a relevant subject or adequate performance in more than one GCE subject.
- Other related Level 3 qualifications
- An Access to Higher Education Certificate awarded by a recognised institution
- An international equivalent of the above
- Related work experience

Plus you will usually have five GCSE subjects including Maths (or equivalent) and English Language at grade C/grade 4 or above is strongly recommended. We will normally accept Key Skills and Higher Diploma qualifications as the equivalent to GCSEs.



What if I don't meet any of these entry requirements?

Even if you have few or no formal qualifications, you may be able to gain entry to the course if you have the required communication and learning skills, as well as the knowledge, experience and motivation to succeed.

You will be required to take an English and/or Mathematics skills test if you do not hold GCSE Maths and English qualifications or their recognised equivalent. You may also be interviewed for the course.

You may need to take an Access to HE course or Foundation (Year 0) course first. If you have been away from academic study for a while, these courses are a great way to get you back into studying. Or if you have never studied before, they help you learn new study skills, essential for success in higher education.

About the Course

The purpose of BTEC Higher National Diploma in Engineering (Electrical & Electronic) is to develop you as professional, self-reflecting individual able to meet the demands of employers in the electrical and electronic, mechanical business sector and adapt to a constantly changing world.

The objectives of the BTEC Higher National Diploma in Engineering (Electrical and Electronic) are as follows:

- To provide you with opportunities to enter, or progress in, employment within the engineering sector, or progress to higher education qualifications such as degrees and honours degree in engineering or a closely related area, by balancing employability skills with academic attainment.
- To provide you with the core knowledge, skills and techniques that all engineers require, irrespective of future specialism, to achieve high performance in the engineering profession.
- To build a body of specialist knowledge, skills and techniques in order to be successful in a range of careers in engineering at the Associate Engineer or Operational Engineer level.
- To develop the skills necessary to fault find and problem solve in a timely, professional manner, reflecting on their work and contributing to the development of the process and environment they operate within.
- To understand the responsibilities of the engineer within society, and work with integrity, regard for cost, sustainability and the rapid rate of change experienced in world class engineering.
- To provide you with opportunities to make progress towards achieving internationally recognised registration with a Professional Body regulated by the Engineering Council.

Course Content

BTEC HNC/HND Engineering (Electrical & Electronic)

Year 1

- Engineering Design
- Engineering Mathematics
- Managing a professional Engineering Project
- Production Engineering for Manufacture
- Automatic, Robotics and PLC
- Quality and Process Improvement
- Electrical and Electronic Principles
- Electrical Machines

(HNC can be awarded on completion of Year 1)

Year 2

- Professional Engineering Management
- Further Mathematics
- Further Programmable Logic Controllers (PLCs)
- Further Electrical Machines and Drives
- Industrial Power, Electronics and Storage
- Embedded Systems
- Further Electrical, Electronic and Digital Principles
- Utilisation of Electrical Power



Assessment

You will benefit from an innovative variety of assessment modes. Assessment is mainly via coursework, which can take forms such as essays and reports, individual and group project work, time constrained assessments, research and consultancy projects, presentations, posters, and design of digital materials.

What can I do next?

BTEC is one of the world's most successful and best-loved applied learning brands, engaging students in practical, interpersonal and thinking skills for more than thirty years.

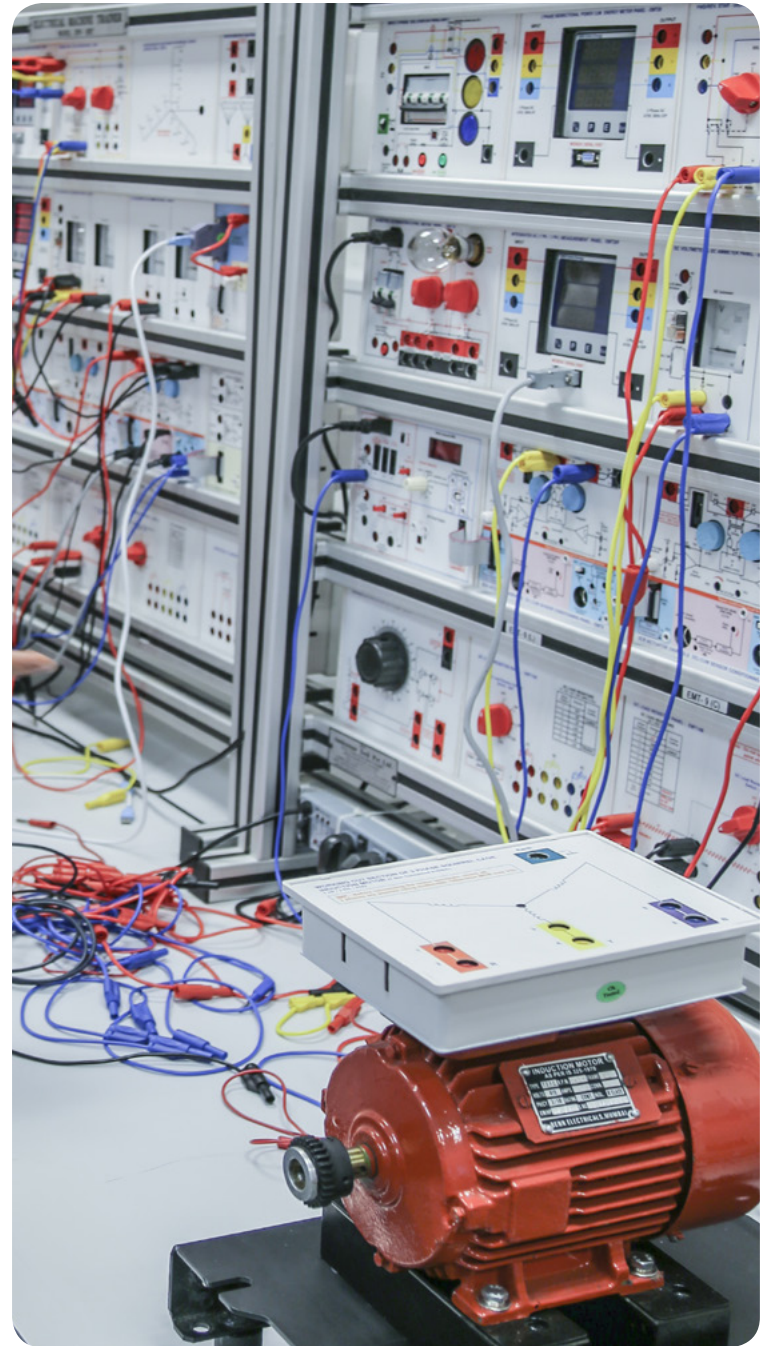
BTECs are work-related qualifications for students taking their first steps into employment, or for those already in employment and seeking career development opportunities. BTECs are widely recognised by the industry. The range of skills acquired on the course will be particularly relevant to electrical and electronic engineering in the general, manufacturing, mechanical, operational pathway.

Holders of a BTEC Higher National in Engineering meet the academic requirements for the Engineering Council Engineering Technician Standard (EngTech).

Graduates can also progress to a BSc(Hons) Top Up degree in Engineering – Electrical and Electronic, awarded by the University of Derby.

Teaching and Learning

You will be taught through a combination of lectures, seminars and tutorials. You will be taught by experienced lecturers whose knowledge and expertise are matched to the content of the modules on the course. When not attending lectures or seminars, you will also be expected to study through independent learning. Independent learning plays a vital role in your studies and involves research, such as reading books and journal articles, preparing assignments and presentations, working on individual and group projects. You will have access to a variety of materials to support you in your learning, such as books, journals, lecture notes and a wide range of e-resources.



BA (Hons)

Business Management [CMI accredited]



BA (Hons) Business Management (CMI accredited)



Fact File

Award	Bachelor of Arts BA (Hons)
Start Dates	September
General Entry Requirements	Page 11
Study Mode and Duration	Full-Time: 3 years
UCAS Code	N200

This degree is awarded by: University of Derby

Entry Requirements

UCAS points	120 (up to 16 from AS-levels)
Specific requirements at A-level	N/A
Specific requirements at GCSE	Five GCSEs at Grade C or Grade 4, including Maths and English

Our entry requirements for this course should be read together with the general entry requirements (see page 11), which detail subjects we accept, alternative qualifications and what we are expecting of degree applicants.

About the Course

Combine a Business Management degree with an internationally recognised professional qualification – and open the door to a high-flying, high-achieving career.

One of our priorities is to foster a new generation of responsible business leaders with a strong moral compass – forward-thinkers who take decisions based on the interests not only of shareholders but also of other stakeholders. Throughout the course, you will therefore look at the role of business in wider society, exploring issues ranging from environmental sustainability to child labour, ethical governance to responsible innovation.

Developed in close consultation with the premier professional body for managers, the Chartered Management Institute (CMI), this course puts you on the fast track to success. You will graduate with a highly regarded BA (Hons) Business Management as well as the CMI Level 5 Diploma in Management and Leadership.

With these qualifications on your CV, you'll signal to prospective employers that you're suited for senior leadership roles and rapid promotion. The Diploma is the benchmark qualification for full CMI membership and takes you a step towards Chartered Manager status. There is no need to take extra exams or coursework to achieve the Diploma: our combined module and CMI assessments give you a smooth route to both qualifications.

Course Content

BA (Hons) Business Management

Year one

- Finance and Business Performance
- Business Economics
- Developing an Enterprising Mindset
- Understanding People in Organisations
- Operations, Supply Chain and IT
- Marketing Fundamentals

Year two

- Managing Financial Resources
- Quantitative Skills for Business
- Managing People
- Sustainability and Responsible Management
- Applied Operations Management
- Digital and Social Media

Year three

- Global Business and Strategy
- International Entrepreneurship
- Developing Leadership and Management
- Business Consultancy Project
- Marketing Across Cultures

What can I do next?

By strengthening your knowledge of business theory and research, the BA (Hons) Business Management studies is the ideal preparation for success. When you graduate, you will be armed with an extensive understanding of all the key business disciplines, together with the practical data collection and research skills that mean you can play an influential part in shaping business strategy and performance.

This powerful combination gives you a real advantage when applying for opportunities such as graduate training schemes with major companies. University of Derby Business Studies graduates are now carving out fulfilling careers in consultancy and client-facing roles in areas such as accounts and finance, HRM, sales, marketing, project management and retail management.

Assessment

You will benefit from an innovative variety of assessment modes. Assessment is mainly via coursework such as traditional essays and reports, group project work, research and consultancy projects, presentations, posters, and design of digital materials. There are also in-class tests and computer-based assessments.

Teaching and Learning

We take a 'scaffolded' approach to learning, so you will have full support in the early stages of your course and can gradually move towards stronger understanding and greater independence. It is a smooth transition to ease your way into both HE-level study and business management practice.

Through your contact with tutors – as well as your participation in College events – you will become more attuned to professional behaviour and will build your skills in critical thinking, creativity and self-reliance before immersing yourself in the wider business community.

The course incorporates formal lectures, sometimes involving guest speakers; tutor-led and student-led seminars; one-to-one and small group tutorials; work experience projects; work-related learning and self-directed study. By stage three, you are expected to be more in charge of your own learning, with module tutors advising and directing your studies.

As a partner student you will be granted access to the University's online learning environment 'University of Derby Online (UDo)'.

BSc (Hons) Civil Engineering Practice



BSc (Hons) Civil Engineering Practice



Fact File

Award	Bachelor of Science BSc (Hons)
Start Dates	September
General Entry Requirements	Page 11

Study Mode and Duration	Full-Time: 3 years
-------------------------	--------------------

UCAS Code	H201
-----------	------

This degree is awarded by: University of Derby

Entry Requirements

UCAS points	120 (up to 16 from AS-levels)
Specific requirements at A-level	At least a C in either Maths, Physics, Science or another related subject at A-level (or equivalent qualification)
Specific requirements at GCSE	Five GCSEs at Grade C or Grade 4, including Maths and English

Our entry requirements for this course should be read together with the general entry requirements (see page 11), which detail subjects we accept, alternative qualifications and what we are expecting of degree applicants.

About the Course

Civil Engineers are responsible for virtually all the great structures around us. It is the work that they do that makes our lives easier – from roads and airports, to access to clean water and electricity. This course will develop your understanding of the process of civil engineering technical design and management. You will be introduced to key skills in structures, fluids, geology, soil mechanics, surveying and materials. Through the mix of lectures, real-life projects and site visits, you will develop the knowledge and skills that employers are looking for.

This degree is accredited as fully satisfying the educational base for an Incorporated Engineer (IEng). You can visit www.jbm.org.uk for further information. This will lead to Membership of the Institution of Civil Engineers (MICE), the Institution of Structural Engineers (MIStructE), the Chartered Institution of Highways and Transportation (MCIHT), and the Institute of Highway Engineers (MIHE) following a period of relevant experience and a professional review.



Course Content

BSc (Hons) Civil Engineering Practice

Year one

- Applied Mathematics 1
- Civil Engineering Construction and Materials
- Construction CAD and BIM
- Structures 1
- Transport Systems and CPD
- Site Surveying 1

Year two

- Applied Mathematics 2
- Geology and Soil Mechanics
- Project Management and Team Leadership
- Fluids and Drainage Engineering
- Structural Design 2
- Transport (Civil)

Year three

- Structural Design Project
- Civil Engineering and Construction Management
- Civil Engineering Hydraulics
- Geotechnics and Utility Investigation
- Independent Project Seminar

What can I do next?

As a graduate you will have the knowledge and skills to start your career. This course is ideal if you wish to start a career within civil engineering or if you are already in the industry but want to develop your skills. It will provide you with the ability to develop a wide range of skills that will prepare you for a variety of career opportunities within the civil engineering sector.

You can continue your professional development and further study in the discipline of civil engineering by taking MSc Civil Engineering and Construction Management course.

Assessment

You will be assessed by a blend of assignments, practical workshops, surveying field work, viva voce and examinations. Assignments would consist of both group and individual assignments.

Teaching and Learning

You will be taught using demonstrations, laboratory sessions, lectures and tutorials. There will also be seminars and independent study sessions. You will make use of the library and Internet facilities.

As a partner student you will be granted access to the University's online learning environment 'University of Derby Online (UDo)'.



BSc (Hons)

Engineering [Electrical and Electronic]



BSc (Hons) Engineering (Electrical and Electronic)



Fact File

Award	Bachelor of Science BSc (Hons)
Start Dates	September
General Entry Requirements	Page 11
Study Mode and Duration	Full-Time: 3 years
UCAS Code	H620

This degree is awarded by: University of Derby

Entry Requirements

UCAS points	120 (up to 16 from AS-levels)
Specific requirements at A-level	At least a C in either Maths, Physics, Science or another related subject at A-level (or equivalent qualification)
Specific requirements at GCSE	Five GCSEs at Grade C or Grade 4, including Maths and English

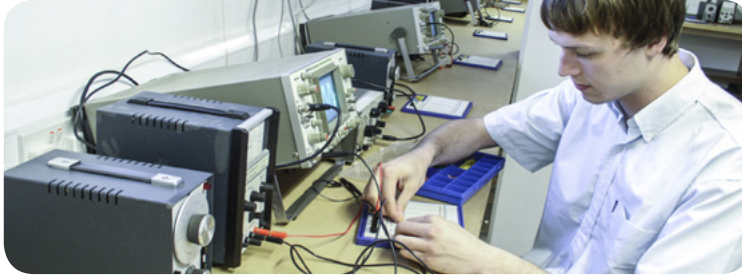
Our entry requirements for this course should be read together with the general entry requirements (see page 11), which detail subjects we accept, alternative qualifications and what we are expecting of degree applicants.

About the Course

In electrical engineering, we apply the fact that electricity can be used to transport and deliver energy. It lights our homes, runs many of our domestic gadgets, and keeps the wheels of industry turning. It is such an established and reliable part of our lives that we too often take it for granted, yet it remains a fascinating and developing field of study. Electrical engineering deals with the study of motors and generators and their control, power transmission and distribution systems, and the principles that underlie them.

In electronic engineering, we apply electricity to carry, process and store information. This is the driving force behind today's information revolution, and forms the basis of everyday devices like the mobile phone and the computer, as well as a huge range of systems used in commerce and industry. Electronics depends heavily on semiconductor technology, which has led to the invention of the famous microchip.

Both electrical and electronic engineering depend on the same fundamental scientific laws, but diverge widely beyond these basics.



Course Content

BSc (Hons) Electrical & Electronic Engineering

Year one

- Signal and Circuit Analysis Techniques
- Transport and CPD
- Engineering Workshop
- Electromagnetic Devices
- Analogue and Digital Electronics
- Sustainable Energy Systems

Year two

- Circuit Analysis
- Project Management and Team Leadership
- Control and Instrumentation Technology
- Electrical Machines Technology
- Transport Engineering
- Electronic Systems

Year three

- Independent Project (Double Module)
- Electrical Power Systems
- Innovation in Sustainable Engineering Design
- Electronic Devices and Systems
- Sensors and Control

What can I do next?

You will have a wide range of employment opportunities in electrical and electronic engineering when you graduate. You could move into development, installation or maintenance roles in areas as diverse as avionics, medical electronics, automotive electrical and electronic systems, electrical power generation, mining, or the rail industry. It may not be long before you find you are a team or project leader, managing significant budgets, and the work of others. The numeracy and problem solving skills you will develop during this course will also give you a wide range of alternative career options, including teaching, banking, accountancy, technical sales or management.

University of Derby graduates can be found working in railway signalling, train construction and maintenance, managing oilfield instrumentation systems, developing microprocessor systems in cars, developing safety systems for forklift trucks or aircraft engine controls.

Assessment

You will be assessed by a blend of assignments and examinations. Assignments may relate to work at the computer or in the laboratory, or may be a piece of written or analytical work. You will also take part in mini-projects; these are really popular with students as they are a hands-on way of learning new skills.

Teaching and Learning

The programme is taught through a mix of lectures, tutorials, and laboratory work. All modules are supported through UDo, the University of Derby Online, so you have access to essential support materials at any time of the day or night.

As a partner student you will be granted access to the University's online learning environment 'University of Derby Online (UDo)'.



BSc (Hons)

International Hospitality Management



BA (Hons) International Hospitality Management



Fact File

Award	Bachelor of Arts - BA (Hons)
Start Dates	Start: September
General Entry Requirements	Page 11
Study Mode and Duration	Full Time: 3 years
UCAS Code	N226

This degree is awarded by: University of Derby

Entry Requirements

You will be invited to an interview to discuss your qualifications, experience and any other related information. You will need:

- 120 UCAS points from A-level (up to 16 from AS-levels) or equivalent
- Five GCSEs at or above C (or Grade 4), including Maths and English or the equivalent.

All applicants are subject to approval from the University of Derby.

Our entry requirements for this course should be read together with the general entry requirements (see page 11), which detail subjects we accept, alternative qualifications and what we are expecting of degree applicants.

About the Course

Hospitality is now one of the largest and fastest growing sectors in the global economy. Few other industries can offer you such a fast ascent up the career ladder from an early age: many hospitality professionals have reached their first managerial role before the age of 30. With its powerful mix of industry insights, theoretical understanding, academic rigour and a truly international curriculum, BA (Hons) International Hospitality Management gives you a competitive edge.

This degree captures the major trends which are transforming the industry today – from a greater emphasis on sustainability to technological advances, from changing customer expectations to new concepts of luxury. As the role of the hospitality manager becomes ever more complex and demanding, we cover all the crucial topics to help you hit the ground running in your career. You will gain skills in leadership, finance, IT and human resources to go with your in-depth knowledge of hospitality operations.

Course Content

BA (Hons) International Hospitality Management

Year one:

- Hospitality Societies
- Business Environment of the Visitor Economy
- Current Scenarios. Future Directions
- Organisational Transformation
- Project Design - Planning and Management
- Service and Experience Co-creation

Year two:

- Hotel Revenue Management
- Sustainable Hospitality and Leisure Operations
- Business Innovation, Entrepreneurship and Financial Planning
- Healthy and Sustainable Consumption
- Procurement and Supply in the Visitor Economy
- Research Skills

Year three:

- Talent Management
- Consumer Behaviour
- Independent Study (double module)
- Strategic Management
- International Resort Management



What can I do next?

- The unique real-world learning we deliver means that you will be highly employable, ready to drive the future of the industry. You could progress to roles such as food and beverage or event supervisor, front office or housekeeping supervisor, assistant restaurant manager, graduate trainee hotel manager, sales executive, licensed retail manager or contract catering specialist.
- You can consider progressing to postgraduate studies in related subjects, including MSc International Hospitality Management which prepares you not only for senior management but also for roles in academia.

Assessment

You will be assessed in a number of ways including: essays and reports, practical assessments, group or individual oral presentations, posters, industry case studies, examinations and a sustained piece of independent study.

Teaching and Learning

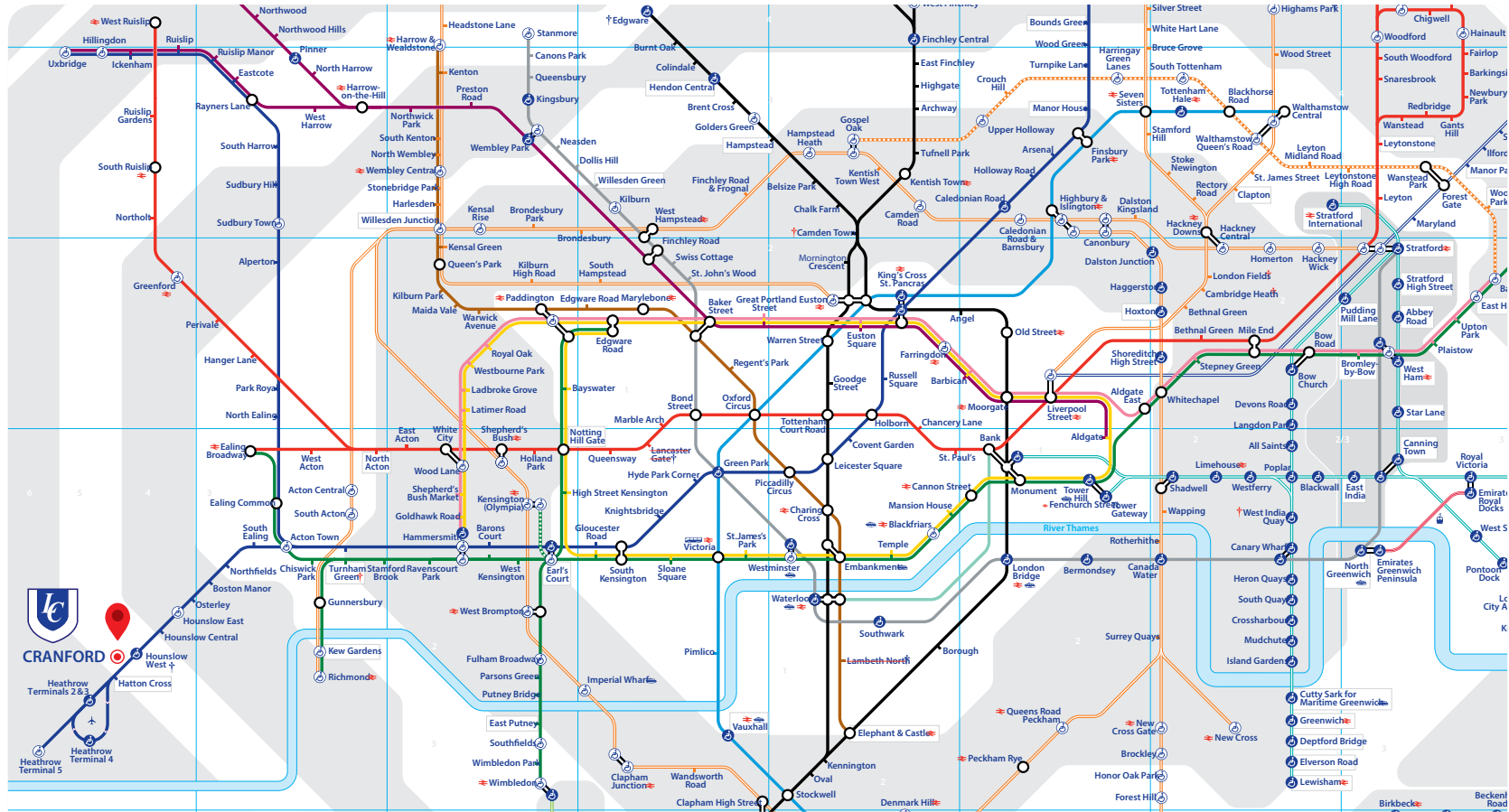
You will study through formal lectures, seminars, workshops, guided study, applied practice sessions, practical demonstrations and videos, small group exercises, and case study discussions.

You will be expected to attend two days per week; Monday to Friday. Your contact time with your lecturers and tutors could be anytime between 10am and 6pm. Your timetable will usually be available on the enrolment week for each semester.

As a partner student you will be granted access to the University's online learning environment 'University of Derby Online (UDo)'.

College Location

CAMPUS LOCATION

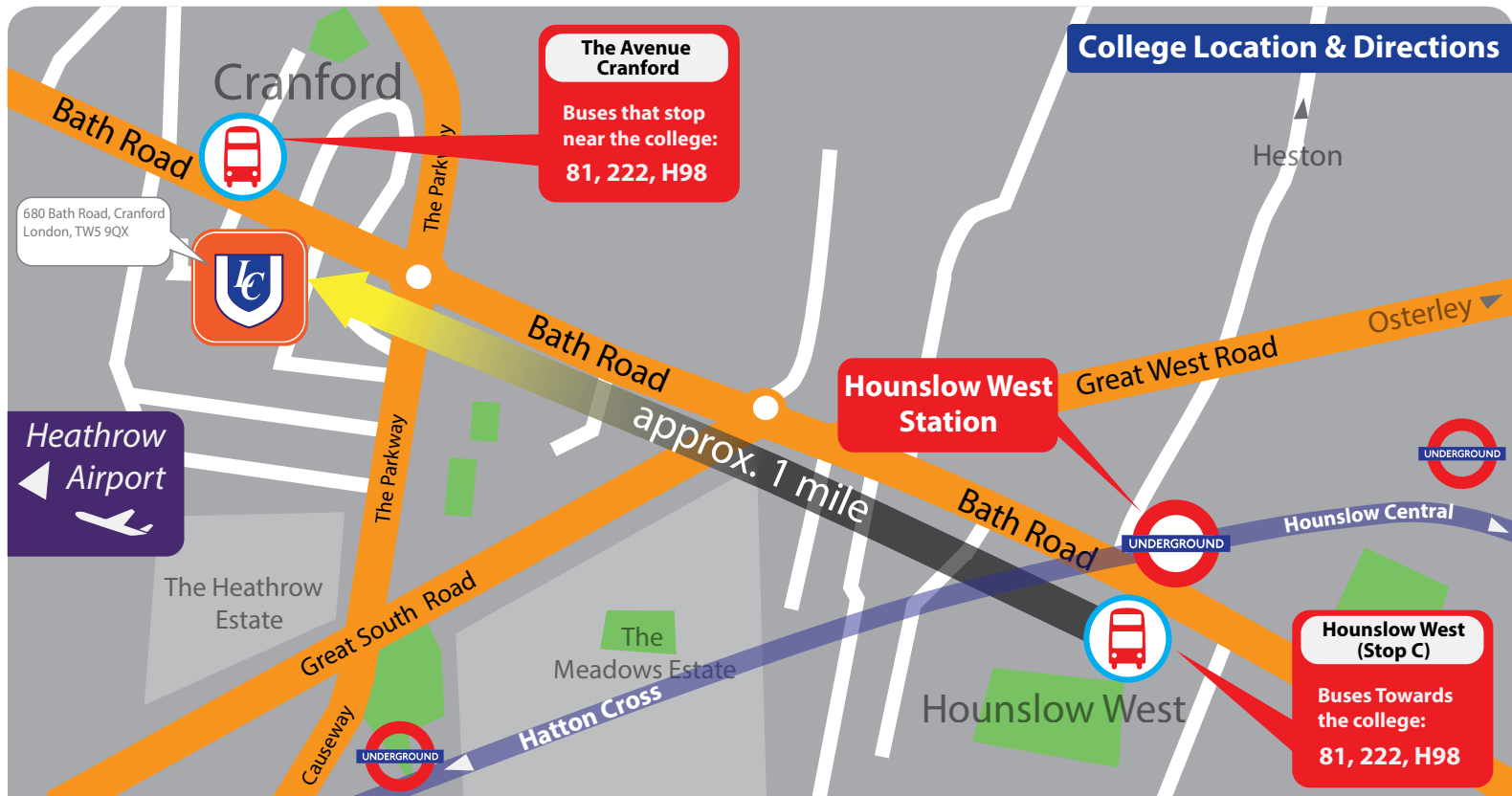


Bakerloo	Central	Circle	District	East London	Hammersmith & City	DOCKLANDS LIGHT RAIL	24 hour London Travel Information 020 7222 1234	www.tfl.gov.uk
Metropolitan	Northern	Piccadilly	Victoria	Waterloo & City	Jubilee	National Rail	Telephone 020 7918 3015	www.tflwap.gov.uk/

Reg. user No. 04/E/1397

© Transport for London

LTM CD(a) 02.03



Street Location Map The London College

680 Bath Road, Cranford
London, TW5 9QX



Main roads



Tube



Bus Stop



TUBE Hounslow Central (Piccadilly Line), then by bus.
Hounslow West (Piccadilly Line), then by bus from Hounslow West (Stop C).



BUS 81, 222, H98 - buses that stop outside the college.
Buses run every 3-5 minutes.



BICYCLE Use the TFL journey planner to plan your cycle route to the College. There is a covered bike shed located in the car park.



CAR Enter the postcode TW5 9QX into your satnav, or take the M4 or M25 towards Heathrow. When on Great Western Road exit at the roundabout into Bath Road. After approximately 1 mile drive you will reach the college.

PROSPECTUS

2024/2025



Admissions Office, 680 Bath Road, Cranford, Greater London, TW5 9QX
Tel: 020 7243 4000 E-mail: admissions@lcuck.ac.uk Website: www.lcuck.ac.uk
© UCK, UK, 2024, All Right Reserved

